

STYLE A: 0.775" TO 1.500" BORE

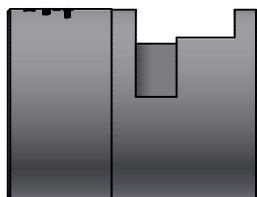
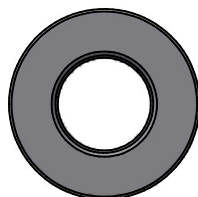
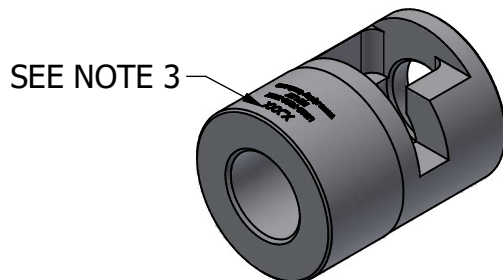
NOTES:

1. MATERIAL: BLACK DELRIN
2. BUSHING IS COMPATIBLE WITH US16-7010 (MAX) STRIPPING PLATFORM
3. BUSHING PART NUMBER: US16-7200-XXXX WHERE "-XXXX" IS THE BORE IN INCHES
4. BUSHING BORE IS SIZED BASED ON CABLE OD +0.035" TO +0.060"

EXAMPLE: PART NUMBER: **US16-7200-1100**

BUSHING BORE: 1.100"

CABLE APPLICATION: 1.040" -1.065"



STYLE B: 1.525" TO 2.500" BORE

THIS DOCUMENT CONTAINS INFORMATION THAT IS CONFIDENTIAL AND PROPRIETARY TO RIPLEY, A DIVISION OF CAPEWELL COMPONENTS COMPANY, LLC. THIS DOCUMENT IS FURNISHED ON THE UNDERSTANDING THAT THE DOCUMENT AND THE INFORMATION IT CONTAINS WILL NOT BE COPIED OR DISCLOSED TO OTHERS OR USED FOR ANY PURPOSE OTHER THAN CONDUCTING BUSINESS WITH RIPLEY, AND WILL BE RETURNED AND ALL FURTHER USE DISCONTINUED UPON REQUEST BY RIPLEY. COPYRIGHT CAPEWELL COMPONENTS COMPANY, LLC. YEAR OF COPYRIGHT IS FIRST YEAR INDICATED ON THIS DOCUMENT. ALL RIGHTS RESERVED.

UNLESS OTHERWISE SPECIFIED: DECIMALS .XX +/- .01 .XXX +/- .005 .XXXX +/- .0002 FRACTIONS +/- 1/64 RADIUS & FILLETS .005-.020 ANGLES +/- 1° DRILLED HOLES +.003/- .001 MACHINED SURFACES 63µIN ID & OD RUNOUT .003 F (FIM) CRITICAL <XXX> DIMENSION NOTE, NUMBER <X>	DRAWN	migenesd	3/25/2024	SIZE A	RIPLEY CROMWELL, CONNECTICUT 06416 USA www.ripley-tools.com
	CHECKED			SCALE 1 / 3	
	APPROVED	BB	3/25/2024	TITLE BUSHING AP MAX- GENERIC INTERFACE	
	REFERENCE:	DWG NO		REV	
	SUPERSEDES:	US16-7200-CI		0	
	SHEET 1 OF 1				

0	4686	RELEASED FOR PRODUCTION	OM	4/10/2024
REV	ECN	DESCRIPTION	APP'D	DATE